



Are You Ready To Be A Part Of  
A Verdant Story at  
**BEYTEPE MY RESIDENCE**





A LIFE BEYOND IMAGINATION

**BEYTEPE** | *Elit Manzara*  
MY RESIDENCE











## What Is Waiting For You In BEYTEPE MY RESIDENCE



Every good story starts with a small dream. Beytepe My Residence chases rainbows, not standards. It offers you unique experiences and comfortable times.





A Happy Life In  
BEYTEPE MY RESIDENCE



Everyone talks about luxury and comfort, but few acquire it...  
Are you ready to be a part of a new verdant story in Gebze?





Uninterrupted Sea View From Your Balcony  
In BEYTEPE MY RESIDENCE



The relaxing sound of the sea and its eye-catching view will be with you...  
New hopes are In BEYTEPE MY RESIDENCE with an uninterrupted sea view  
from your balcony.







Easy Transportation From Istanbul And Surrounding Cities  
In BEYTEPE MY RESIDENCE



You are very close to the peaceful magic of green ...  
Easy transportation and uninterrupted service from big cities and neighboring cities  
available in BeytepeMy Residence.









Spa, Turkish Bath, Fitness Center And Social Facilities At  
**BEYTEPE MY RESIDENCE**



We have thought of everything for a healthy and dynamic life.  
Here, you will find many activities that will enrich your social life and  
you can relieve the tiredness of the day.





A Life With Nature In A Verdant Environment  
In BEYTEPE MY RESIDENCE



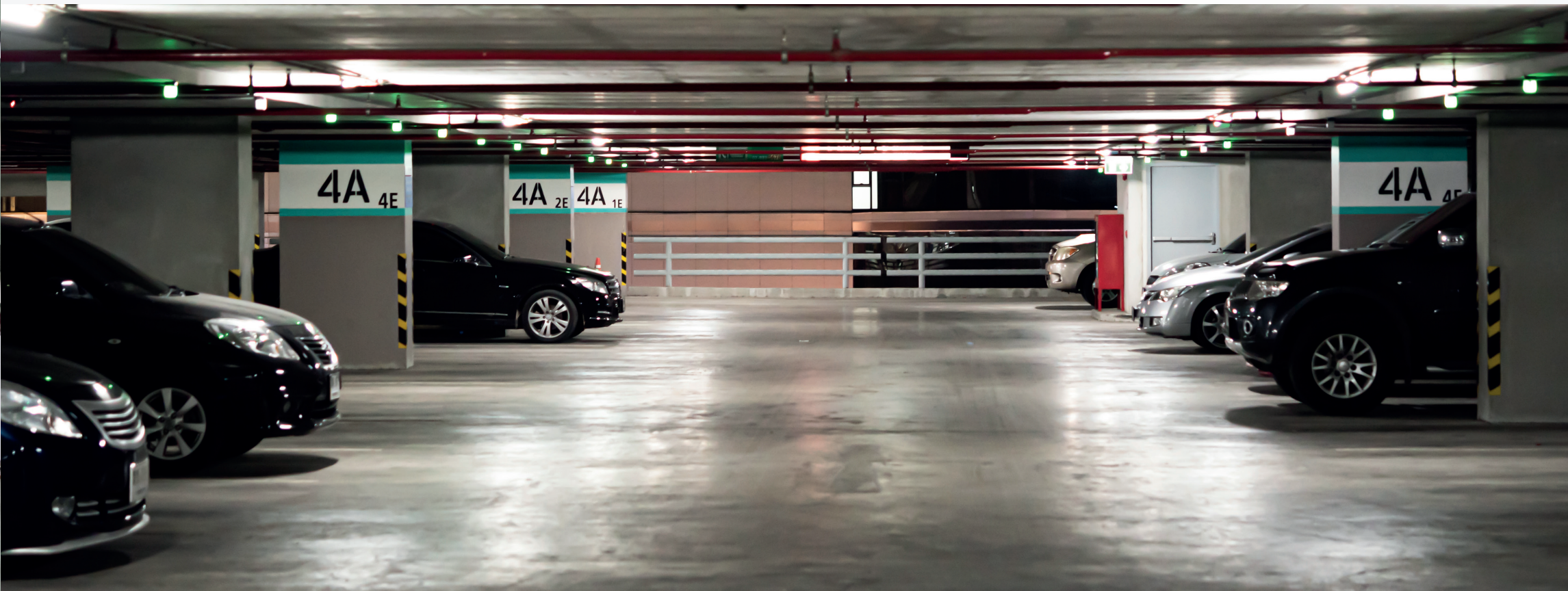
In the sky blue and greenery that gives color to the most beautiful paintings...  
Imagine taking a break from the busy pace of life for a moment; imagine the  
pleasure of relaxing in the unique atmosphere where green meets blue...







Your Vehicles Are Safe With Indoor Parking  
In BEYTEPE MY RESIDENCE



Your vehicle is safe in our parking garage reserved for you.  
Don't worry about security and finding a parking space.





A Playground Where Your Children Will Have Fun  
In BEYTEPE MY RESIDENCE



Your childhood and fairy tales are a invariable part of your happiest memories.  
You will be the hero of the games you play with your children in our playgrounds.









Walkways In Nature  
In BEYTEPE MY RESIDENCE



Privilege is unique to people ... You will experience this feeling in the healing and pleasurable environment of nature in Beytepe My Residence.





## Smart Home Systems In BEYTEPE MY RESIDENCE



The enviable glamor that combines visual richness with technology ...  
A unique experience that you will not want to leave in apartments equipped with smart home systems.





From Supermarket to Hairdresser to Restaurants and Cafes  
All the Facilities You Need  
In BEYTEPE MY RESIDENCE



Let the world keep eye on you.  
We brought the best brands together for the best.

**BEYTEPE** MY RESIDENCE | *Elit Manzara*







The Highest Level of Earthquake Safety  
In BEYTEPE MY RESIDENCE



The peace and happiness of being safe...  
Peace of mind in Beytepe My Residence with high-level earthquake safety systems.





Numerous Flat Types and Alternatives Suitable for Every Kind of Family  
( 2+1, 3+1, 4+1, 5+1, 6+1 Options )  
In BEYTEPE MY RESIDENCE



Always profit in Beytepe My Residence.  
Enjoy luxury in accordance with your budget with flexible payment advantages...







BEYTEPE | *Elit Manzara*  
MY RESIDENCE

# FLOOR PLANS





# FULL FLOOR PLANS



1<sup>st</sup> BASEMENT FLOOR PLAN

# FULL FLOOR PLANS



BASEMENT-1-2-3. NORMAL FLOOR PLAN



# FULL FLOOR PLANS



4<sup>th</sup> NORMAL FLOOR PLAN

# FULL FLOOR PLANS



PENTHOUSE PLAN



# A BLOCK



## APARTMENT 1 2+1

Net Area : 85.35m<sup>2</sup>  
Gross Area : 94.00m<sup>2</sup>  
Overall Gross Area : 125.00m<sup>2</sup>

Living R. : 26.00m<sup>2</sup>  
Kitchen : 9.63m<sup>2</sup>  
Bedroom : 14.30m<sup>2</sup>  
Bedroom : 17.62m<sup>2</sup>  
Antre : 8.90m<sup>2</sup>  
Bathroom : 4.20m<sup>2</sup>  
Balcony : 4.70m<sup>2</sup>

A BLOCK 1. BASEMENT FLOOR

# A BLOCK



## APARTMENT 2 2+1

Net Area : 85.31m<sup>2</sup>  
Gross Area : 93.00m<sup>2</sup>  
Overall Gross Area : 124.00m<sup>2</sup>

Living R. : 22.38m<sup>2</sup>  
Kitchen : 10.10m<sup>2</sup>  
Bedroom : 16.00m<sup>2</sup>  
Bedroom : 13.00m<sup>2</sup>  
Entry Hall : 8.53m<sup>2</sup>  
Bathroom : 5.80m<sup>2</sup>  
Terrace : 9.50m<sup>2</sup>

A BLOCK 1. BASEMENT FLOOR



# A BLOCK



## APARTMENT 3 2+1

Net Area : 96.38m<sup>2</sup>  
Gross Area : 103.00m<sup>2</sup>  
Overall Gross Area : 137.00m<sup>2</sup>

Living R. : 24.67m<sup>2</sup>  
Kitchen : 11.80m<sup>2</sup>  
Bedroom : 18.70m<sup>2</sup>  
Bedroom : 13.55m<sup>2</sup>  
Antre : 15.00m<sup>2</sup>  
WC : 2.80m<sup>2</sup>  
Bathroom : 5.00m<sup>2</sup>  
Balcony : 4.86m<sup>2</sup>

A BLOCK 1. BASEMENT FLOOR

# A BLOCK



## APARTMENT 4 2+1

Net Area : 75.10m<sup>2</sup>  
Gross Area : 82.00m<sup>2</sup>  
Overall Gross Area : 109.00m<sup>2</sup>

Living R. : 25.32m<sup>2</sup>  
Kitchen : 8.40m<sup>2</sup>  
Bedroom : 17.00m<sup>2</sup>  
Bedroom : 8.50m<sup>2</sup>  
Antre : 7.98m<sup>2</sup>  
Bathroom : 4.40m<sup>2</sup>  
Balcony : 3.50m<sup>2</sup>

A BLOCK 1. BASEMENT FLOOR



# A BLOCK



## APARTMENT 5-8-11-14 3+1

Net Area : 113.37m<sup>2</sup>  
Gross Area : 140.00m<sup>2</sup>  
Overall Gross Area : 187.00m<sup>2</sup>

Living R. : 20.45m<sup>2</sup>  
Kitchen : 14.29m<sup>2</sup>  
Bedroom : 17.72m<sup>2</sup>  
Bedroom : 17.00m<sup>2</sup>  
Bedroom : 9.75m<sup>2</sup>  
Antre : 11.65m<sup>2</sup>  
Shower : 4.36m<sup>2</sup>  
WC : 3.70m<sup>2</sup>  
Bathroom : 5.20m<sup>2</sup>  
Balcony : 4.39m<sup>2</sup>  
Balcony : 4.86m<sup>2</sup>

A BLOCK NORMAL GROUND FLOOR-1-2-3.

# A BLOCK



## APARTMENT 6-9-12-15 4+1

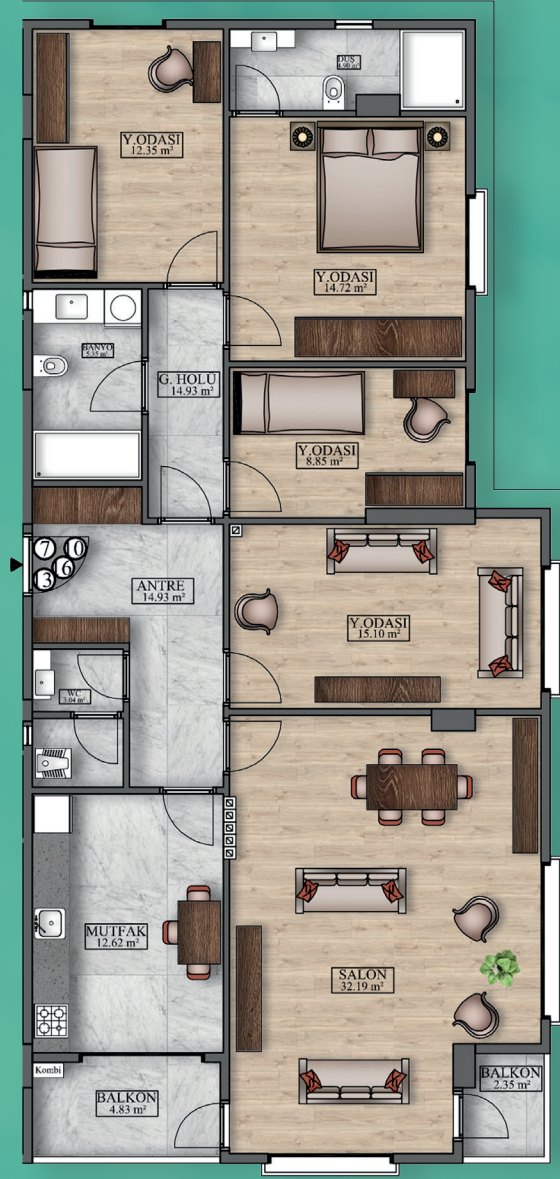
Net Area : 138.18m<sup>2</sup>  
Gross Area : 153.00m<sup>2</sup>  
Overall Gross Area : 204.00m<sup>2</sup>

Living R. : 32.31m<sup>2</sup>  
Kitchen : 18.82m<sup>2</sup>  
Bedroom : 14.75m<sup>2</sup>  
Bedroom : 14.70m<sup>2</sup>  
Bedroom : 12.30m<sup>2</sup>  
Bedroom : 10.30m<sup>2</sup>  
Antre : 16.63m<sup>2</sup>  
Shower : 2.90m<sup>2</sup>  
WC : 3.40m<sup>2</sup>  
Bathroom : 5.65m<sup>2</sup>  
Balcony : 6.42m<sup>2</sup>

A BLOCK NORMAL GROUND FLOOR-1-2-3.



## A BLOCK



### APARTMENT 7-10-13-16 4+1

Net Area : 136.16m<sup>2</sup>  
Gross Area : 143.00m<sup>2</sup>  
Overall Gross Area : 191.00m<sup>2</sup>

Living R. : 32.19m<sup>2</sup>  
Kitchen : 12.62m<sup>2</sup>  
Bedroom : 15.10m<sup>2</sup>  
Bedroom : 14.72m<sup>2</sup>  
Bedroom : 12.35m<sup>2</sup>  
Bedroom : 8.85m<sup>2</sup>  
Antre : 14.93m<sup>2</sup>  
Gece Holü : 4.93m<sup>2</sup>  
Shower : 4.90m<sup>2</sup>  
WC : 3.04m<sup>2</sup>  
Bathroom : 5.35m<sup>2</sup>  
Balcony : 2.35m<sup>2</sup>  
Balcony : 4.83m<sup>2</sup>

A BLOCK NORMAL GROUND FLOOR-1-2-3.

## A BLOCK



### APARTMENT 17 5+1

Net Area : 209.90m<sup>2</sup>  
Gross Area : 236.00m<sup>2</sup>  
Overall Gross Area : 315.00m<sup>2</sup>

Living R. : 37.41m<sup>2</sup>  
Kitchen : 14.30m<sup>2</sup>  
Bedroom : 17.35m<sup>2</sup>  
Bedroom : 11.31m<sup>2</sup>  
Bedroom : 23.32m<sup>2</sup>  
Bedroom : 22.96m<sup>2</sup>  
Bedroom : 16.37m<sup>2</sup>  
Entry Halls : 25.72m<sup>2</sup>  
Shower : 3.40m<sup>2</sup>  
Bathroom : 4.30m<sup>2</sup>  
Bathroom : 5.60m<sup>2</sup>  
Balcony : 4.38m<sup>2</sup>  
Balcony : 2.35m<sup>2</sup>  
Balcony : 21.13m<sup>2</sup>

A BLOCK 4<sup>st</sup> NORMAL FLOOR - PENTHOUSE



# A BLOCK



## APARTMENT 18 5+1

Net Area : 195.02m<sup>2</sup>  
Gross Area : 218.00m<sup>2</sup>  
Overall Gross Area : 291.00m<sup>2</sup>

Living R. : 31.05m<sup>2</sup>  
Kitchen : 13.30m<sup>2</sup>  
Bedroom : 13.00m<sup>2</sup>  
Bedroom : 13.66m<sup>2</sup>  
Bedroom : 22.00m<sup>2</sup>  
Bedroom : 12.12m<sup>2</sup>  
Bedroom : 14.00m<sup>2</sup>  
Entry Halls : 23.65m<sup>2</sup>  
Laundry Room : 2.77m<sup>2</sup>  
WC : 1.50m<sup>2</sup>  
WC : 3.05m<sup>2</sup>  
Shower : 4.40m<sup>2</sup>  
Bathroom : 5.82m<sup>2</sup>  
Bathroom : 8.90m<sup>2</sup>  
Balcony : 25.80m<sup>2</sup>

A BLOCK 4<sup>st</sup> NORMAL FLOOR - PENTHOUSE

# A BLOCK



## APARTMENT 19 5+1

Net Area : 183.50m<sup>2</sup>  
Gross Area : 94.00m<sup>2</sup>  
Overall Gross Area : 125.00m<sup>2</sup>

Living R. : 30.00m<sup>2</sup>  
Kitchen : 11.26m<sup>2</sup>  
Bedroom : 15.48m<sup>2</sup>  
Bedroom : 11.92m<sup>2</sup>  
Bedroom : 21.90m<sup>2</sup>  
Bedroom : 17.80m<sup>2</sup>  
Bedroom : 11.12m<sup>2</sup>  
Entry Halls : 28.97m<sup>2</sup>  
Shower : 5.15m<sup>2</sup>  
Bathroom : 4.48m<sup>2</sup>  
Bathroom : 8.35m<sup>2</sup>  
Balcony : 2.15m<sup>2</sup>  
Terrace : 14.92m<sup>2</sup>

A BLOCK 4<sup>st</sup> NORMAL FLOOR - PENTHOUSE



# A BLOCK



ALT KAT



ÜST KAT

## A BLOCK 4<sup>st</sup> NORMAL FLOOR - PENTHOUSE

### APARTMENT 20 5+1

Net Area : 200.73m<sup>2</sup>  
Gross Area : 222.00m<sup>2</sup>  
Overall Gross Area : 296.00m<sup>2</sup>

Living R. : 31.15m<sup>2</sup>  
Kitchen : 16.00m<sup>2</sup>  
Bedroom : 15.75m<sup>2</sup>  
Bedroom : 12.65m<sup>2</sup>  
Bedroom : 18.45m<sup>2</sup>  
Bedroom : 15.85m<sup>2</sup>  
Bedroom : 13.90m<sup>2</sup>  
Entry Halls : 25.95m<sup>2</sup>  
Shower : 4.60m<sup>2</sup>  
Bathroom : 4.30m<sup>2</sup>  
Bathroom : 6.90m<sup>2</sup>  
Kiler : 2.25m<sup>2</sup>  
Balcony : 2.35m<sup>2</sup>  
Terrace : 30.63m<sup>2</sup>





# B BLOCK



## APARTMENT 1 2+1

Net Area : 91.08m<sup>2</sup>  
Gross Area : 98.00m<sup>2</sup>  
Overall Gross Area : 131.00m<sup>2</sup>

Living R. : 36.30m<sup>2</sup>  
Kitchen : 8.78m<sup>2</sup>  
Bedroom : 15.30m<sup>2</sup>  
Bedroom : 8.50m<sup>2</sup>  
Entry Hall : 7.40m<sup>2</sup>  
Bathroom : 5.30m<sup>2</sup>  
Terrace : 9.50m<sup>2</sup>

B BLOCK 1. BASEMENT FLOOR

# B BLOCK



## APARTMENT 2 3+1

Net Area : 111.38m<sup>2</sup>  
Gross Area : 125.00m<sup>2</sup>  
Overall Gross Area : 167.00m<sup>2</sup>

Living R. : 31.00m<sup>2</sup>  
Kitchen : 14.00m<sup>2</sup>  
Bedroom : 18.71m<sup>2</sup>  
Bedroom : 15.00m<sup>2</sup>  
Bedroom : 8.50m<sup>2</sup>  
Entry Hall : 10.84m<sup>2</sup>  
WC : 3.10m<sup>2</sup>  
Bathroom : 5.40m<sup>2</sup>  
Balcony : 4.83m<sup>2</sup>

B BLOCK 1. BASEMENT FLOOR



# B BLOCK



## APARTMENT 3 2+1

Net Area : 111.55m<sup>2</sup>  
Gross Area : 122.00m<sup>2</sup>  
Overall Gross Area : 163 .00m<sup>2</sup>

Living R. : 36.40m<sup>2</sup>  
Kitchen : 10.68m<sup>2</sup>  
Bedroom : 20.01m<sup>2</sup>  
Bedroom : 11.66m<sup>2</sup>  
Entry Hall : 11.00m<sup>2</sup>  
Shower : 2.80m<sup>2</sup>  
WC : 3.50m<sup>2</sup>  
Bathroom : 5.98m<sup>2</sup>  
Terrace : 9.52m<sup>2</sup>

B BLOCK 1. BASEMENT FLOOR

# B BLOCK



## APARTMENT 4-7-10-13 3+1

Net Area : 126.24m<sup>2</sup>  
Gross Area : 137.00m<sup>2</sup>  
Overall Gross Area : 183.00m<sup>2</sup>

Living R. : 36.16m<sup>2</sup>  
Kitchen : 13.23m<sup>2</sup>  
Bedroom : 18.24m<sup>2</sup>  
Bedroom : 16.17m<sup>2</sup>  
Bedroom : 12.74m<sup>2</sup>  
Entry Hall : 9.32m<sup>2</sup>  
Shower : 5.00m<sup>2</sup>  
WC : 3.00m<sup>2</sup>  
Bathroom : 6.50m<sup>2</sup>  
Balcony : 5.88m<sup>2</sup>

B BLOCK NORMAL GROUND FLOOR-1-2-3.



## B BLOCK



### APARTMENT 5-8-11-14 3+1

Net Area : 116.90m<sup>2</sup>  
Gross Area : 138.00m<sup>2</sup>  
Overall Gross Area : 184.00m<sup>2</sup>

Living R. : 20.45m<sup>2</sup>  
Kitchen : 17.22m<sup>2</sup>  
Bedroom : 17.21m<sup>2</sup>  
Bedroom : 15.77m<sup>2</sup>  
Bedroom : 14.45m<sup>2</sup>  
Entry Hall : 13.47m<sup>2</sup>  
Shower : 5.00m<sup>2</sup>  
WC : 3.10m<sup>2</sup>  
Bathroom : 5.40m<sup>2</sup>  
Balcony : 4.83m<sup>2</sup>

B BLOCK NORMAL GROUND FLOOR-1-2-3.

## B BLOCK



### APARTMENT 6-9-12-15 2+1

Net Area : 114.43m<sup>2</sup>  
Gross Area : 124.00m<sup>2</sup>  
Overall Gross Area : 165.00m<sup>2</sup>

Living R. : 37.97m<sup>2</sup>  
Kitchen : 15.11m<sup>2</sup>  
Bedroom : 18.42m<sup>2</sup>  
Bedroom : 14.00m<sup>2</sup>  
Entry Hall : 11.90m<sup>2</sup>  
Shower : 2.80m<sup>2</sup>  
WC : 3.50m<sup>2</sup>  
Bathroom : 5.98m<sup>2</sup>  
Balcony : 4.75m<sup>2</sup>

B BLOCK NORMAL GROUND FLOOR-1-2-3.



## B BLOCK



### APARTMENT 16

4+1

Net Area : 190.51m<sup>2</sup>  
Gross Area : 209.00m<sup>2</sup>  
Overall Gross Area : 279.00m<sup>2</sup>

Living R. : 35.41m<sup>2</sup>  
Kitchen : 13.13m<sup>2</sup>  
Bedroom : 18.60m<sup>2</sup>  
Bedroom : 17.50m<sup>2</sup>  
Bedroom : 16.16m<sup>2</sup>  
Bedroom : 13.40m<sup>2</sup>  
Entry Halls : 26.39m<sup>2</sup>  
Shower : 2.65m<sup>2</sup>  
WC : 2.10m<sup>2</sup>  
Bathroom : 8.00m<sup>2</sup>  
Balcony : 10.88m<sup>2</sup>  
Terrace : 26.29m<sup>2</sup>

B BLOCK 4<sup>st</sup> NORMAL FLOOR - PENTHOUSE

## B BLOCK



### APARTMENT 17

3+1

Net Area : 140.27m<sup>2</sup>  
Gross Area : 161.00m<sup>2</sup>  
Overall Gross Area : 215.00m<sup>2</sup>

Living R. : 31.00m<sup>2</sup>  
Kitchen : 10.90m<sup>2</sup>  
Bedroom : 15.50m<sup>2</sup>  
Bedroom : 18.00m<sup>2</sup>  
Bedroom : 20.00m<sup>2</sup>  
Entry Halls : 18.40m<sup>2</sup>  
Shower : 3.20m<sup>2</sup>  
Bathroom : 5.50m<sup>2</sup>  
WC : 2.30m<sup>2</sup>  
Balcony : 2.07m<sup>2</sup>  
Balcony : 13.40m<sup>2</sup>

B BLOCK 4<sup>st</sup> NORMAL FLOOR - PENTHOUSE



## B BLOCK



### APARTMENT 18 4+1

Net Area : 175.55m<sup>2</sup>  
Gross Area : 192.00m<sup>2</sup>  
Overall Gross Area : 256.00m<sup>2</sup>

Living R. : 36.40m<sup>2</sup>  
Kitchen : 16.75m<sup>2</sup>  
Bedroom : 14.81m<sup>2</sup>  
Bedroom : 23.96m<sup>2</sup>  
Bedroom : 15.67m<sup>2</sup>  
Bedroom : 14.80m<sup>2</sup>  
Entry Halls : 26.16m<sup>2</sup>  
Shower : 2.26m<sup>2</sup>  
Bathroom : 5.75m<sup>2</sup>  
WC : 1.80m<sup>2</sup>  
WC : 1.84m<sup>2</sup>  
Balcony : 4.85m<sup>2</sup>  
Balcony : 10.50m<sup>2</sup>

B BLOCK 4<sup>st</sup> NORMAL FLOOR - PENTHOUSE

## B BLOCK



### APARTMENT 19 5+1

Net Area : 227.05m<sup>2</sup>  
Gross Area : 256.00m<sup>2</sup>  
Overall Gross Area : 342.00m<sup>2</sup>

Living R. : 36.40m<sup>2</sup>  
Kitchen : 15.25m<sup>2</sup>  
Bedroom : 15.75m<sup>2</sup>  
Bedroom : 14.12m<sup>2</sup>  
Bedroom : 27.30m<sup>2</sup>  
Bedroom : 24.35m<sup>2</sup>  
Bedroom : 14.60m<sup>2</sup>  
Entry Halls : 29.67m<sup>2</sup>  
Kiler : 1.50m<sup>2</sup>  
Shower : 5.30m<sup>2</sup>  
Bathroom : 7.35m<sup>2</sup>  
Bathroom : 6.00m<sup>2</sup>  
Balcony : 4.75m<sup>2</sup>  
Terrace : 24.71m<sup>2</sup>

B BLOCK 4<sup>st</sup> NORMAL FLOOR - PENTHOUSE



# C BLOCK



## APARTMENT 1 2+1

Net Area : 120.47m<sup>2</sup>  
Gross Area : 128.00m<sup>2</sup>  
Overall Gross Area : 171.00m<sup>2</sup>

Living R. : 38.50m<sup>2</sup>  
Kitchen : 11.76m<sup>2</sup>  
Bedroom : 19.21m<sup>2</sup>  
Bedroom : 11.99m<sup>2</sup>  
Entry Hall : 15.00m<sup>2</sup>  
Shower : 3.82m<sup>2</sup>  
WC : 3.40m<sup>2</sup>  
Bathroom : 5.94m<sup>2</sup>  
Balcony : 5.15m<sup>2</sup>  
Balcony : 5.70m<sup>2</sup>

C BLOCK 1. BASEMENT FLOOR

# C BLOCK



## APARTMENT 2 2+1

Net Area : 96.95m<sup>2</sup>  
Gross Area : 105.00m<sup>2</sup>  
Overall Gross Area : 140.00m<sup>2</sup>

Living R. : 29.00m<sup>2</sup>  
Kitchen : 10.00m<sup>2</sup>  
Bedroom : 13.00m<sup>2</sup>  
Bedroom : 23.11m<sup>2</sup>  
Entry Hall : 11.90m<sup>2</sup>  
Bathroom : 5.94m<sup>2</sup>  
Balcony : 4.00m<sup>2</sup>

C BLOCK 1. BASEMENT FLOOR



# C BLOCK



## APARTMENT 3 2+1

Net Area : 86.15m<sup>2</sup>  
Gross Area : 94.00m<sup>2</sup>  
Overall Gross Area : 125.00m<sup>2</sup>

Living R. : 24.40m<sup>2</sup>  
Kitchen : 10.20m<sup>2</sup>  
Bedroom : 16.50m<sup>2</sup>  
Bedroom : 8.95m<sup>2</sup>  
Entry Hall : 9.30m<sup>2</sup>  
Shower : 4.00m<sup>2</sup>  
WC : 4.30m<sup>2</sup>  
Bathroom : 5.50m<sup>2</sup>  
Balcony : 3.00m<sup>2</sup>

C BLOCK 1. BASEMENT FLOOR

# C BLOCK



## APARTMENT 4 4+1

Net Area : 139.97m<sup>2</sup>  
Gross Area : 158.00m<sup>2</sup>  
Overall Gross Area : 211.00m<sup>2</sup>

Living R. : 33.34m<sup>2</sup>  
Kitchen : 13.14m<sup>2</sup>  
Bedroom : 16.75m<sup>2</sup>  
Bedroom : 16.50m<sup>2</sup>  
Bedroom : 11.15m<sup>2</sup>  
Bedroom : 14.30m<sup>2</sup>  
Entry Hall : 16.55m<sup>2</sup>  
Shower : 2.78m<sup>2</sup>  
WC : 4.00m<sup>2</sup>  
Bathroom : 5.60m<sup>2</sup>  
Bathroom : 6.51m<sup>2</sup>  
Bathroom : 2.03m<sup>2</sup>  
Bathroom : 3.57m<sup>2</sup>

C BLOCK 1. BASEMENT FLOOR



# C BLOCK



## APARTMENT 5-8-11-14 4+1

Net Area : 141.02m<sup>2</sup>  
Gross Area : 158.00m<sup>2</sup>  
Overall Gross Area : 211.00m<sup>2</sup>

Living R. : 33.34m<sup>2</sup>  
Kitchen : 13.14m<sup>2</sup>  
Bedroom : 16.75m<sup>2</sup>  
Bedroom : 10.25m<sup>2</sup>  
Bedroom : 14.30m<sup>2</sup>  
Bedroom : 11.15m<sup>2</sup>  
Entry Hall : 17.60m<sup>2</sup>  
Shower : 2.78m<sup>2</sup>  
WC : 4.00m<sup>2</sup>  
Bathroom : 5.60m<sup>2</sup>  
Balcony : 6.51m<sup>2</sup>  
Balcony : 2.03m<sup>2</sup>  
Balcony : 3.57m<sup>2</sup>

C BLOCK NORMAL GROUND FLOOR-1-2-3.

# C BLOCK



## APARTMENT 6-9-12-15 4+1

Net Area : 143.78m<sup>2</sup>  
Gross Area : 158.00m<sup>2</sup>  
Overall Gross Area : 211.00m<sup>2</sup>

Living R. : 36.03m<sup>2</sup>  
Kitchen : 11.20m<sup>2</sup>  
Bedroom : 20.47m<sup>2</sup>  
Bedroom : 16.80m<sup>2</sup>  
Bedroom : 15.00m<sup>2</sup>  
Bedroom : 8.58m<sup>2</sup>  
Entry Hall : 12.00m<sup>2</sup>  
Night Hall : 6.40m<sup>2</sup>  
Shower : 4.00m<sup>2</sup>  
WC : 3.30m<sup>2</sup>  
Bathroom : 5.00m<sup>2</sup>  
Balcony : 5.00m<sup>2</sup>

C BLOCK NORMAL GROUND FLOOR-1-2-3.



# C BLOCK



## APARTMENT 7-10-13-16 4+1

Net Area : 154.05m<sup>2</sup>  
Gross Area : 170.00m<sup>2</sup>  
Overall Gross Area : 227.00m<sup>2</sup>

Living R. : 37.18m<sup>2</sup>  
Kitchen : 13.59m<sup>2</sup>  
Bedroom : 18.91m<sup>2</sup>  
Bedroom : 18.69m<sup>2</sup>  
Bedroom : 14.50m<sup>2</sup>  
Bedroom : 11.00m<sup>2</sup>  
Entry Hall : 16.70m<sup>2</sup>  
Shower : 3.82m<sup>2</sup>  
WC : 3.40m<sup>2</sup>  
Bathroom : 5.94m<sup>2</sup>  
Balcony : 5.46m<sup>2</sup>  
Balcony : 4.86m<sup>2</sup>

C BLOCK NORMAL GROUND FLOOR-1-2-3.

# C BLOCK



## APARTMENT 17 5+1

Net Area : 238.45m<sup>2</sup>  
Gross Area : 263.00m<sup>2</sup>  
Overall Gross Area : 351.00m<sup>2</sup>

Living R. : 33.50m<sup>2</sup>  
Kitchen : 15.30m<sup>2</sup>  
Kitchen : 6.55m<sup>2</sup>  
Bedroom : 14.10m<sup>2</sup>  
Bedroom : 12.40m<sup>2</sup>  
Bedroom : 23.10m<sup>2</sup>  
Bedroom : 18.25m<sup>2</sup>  
Bedroom : 18.25m<sup>2</sup>  
Entry Halls : 38.50m<sup>2</sup>  
Shower : 2.78m<sup>2</sup>  
Shower : 3.75m<sup>2</sup>  
Bathroom : 5.70m<sup>2</sup>  
Bathroom : 6.30m<sup>2</sup>  
Balcony : 4.65m<sup>2</sup>  
Terrace : 35.32m<sup>2</sup>

C BLOCK 4. NORMAL FLOOR - PENTHOUSE



## C BLOCK



ALT KAT



ÜST KAT

### APARTMENT 18 4+1

Net Area : 177.03m<sup>2</sup>  
Gross Area : 197.00m<sup>2</sup>  
Overall Gross Area : 263.00m<sup>2</sup>

Living R. : 30.00m<sup>2</sup>  
Kitchen : 14.85m<sup>2</sup>  
Bedroom : 19.30m<sup>2</sup>  
Bedroom : 19.07m<sup>2</sup>  
Bedroom : 19.38m<sup>2</sup>  
Bedroom : 12.90m<sup>2</sup>  
Entry Halls : 25.02m<sup>2</sup>  
Shower : 4.12m<sup>2</sup>  
Bathroom : 5.70m<sup>2</sup>  
Bathroom : 5.85m<sup>2</sup>  
Balcony : 4.00m<sup>2</sup>  
Terrace : 16.84m<sup>2</sup>

### C BLOCK 4. NORMAL FLOOR - PENTHOUSE

## C BLOCK



ALT KAT



ÜST KAT

### APARTMENT 19 5+1

Net Area : 219.60m<sup>2</sup>  
Gross Area : 244.00m<sup>2</sup>  
Overall Gross Area : 326.00m<sup>2</sup>

Living R. : 33.12m<sup>2</sup>  
Kitchen : 12.25m<sup>2</sup>  
Kitchen : 8.90m<sup>2</sup>  
Bedroom : 16.80m<sup>2</sup>  
Bedroom : 21.26m<sup>2</sup>  
Bedroom : 21.25m<sup>2</sup>  
Bedroom : 16.00m<sup>2</sup>  
Bedroom : 20.00m<sup>2</sup>  
Entry Halls : 33.46m<sup>2</sup>  
Shower : 4.20m<sup>2</sup>  
Bathroom : 5.84m<sup>2</sup>  
Bathroom : 5.90m<sup>2</sup>  
Balcony : 5.50m<sup>2</sup>  
Terrace : 15.12m<sup>2</sup>

### C BLOCK 4. NORMAL FLOOR - PENTHOUSE



# C BLOCK



ALT KAT



ÜST KAT

## APARTMENT 20

6+1

Net Area : 246.57m<sup>2</sup>  
Gross Area : 271.00m<sup>2</sup>  
Overall Gross Area : 362.00m<sup>2</sup>

Living R. : 39.21m<sup>2</sup>  
Kitchen : 16.00m<sup>2</sup>  
Bedroom : 21.50m<sup>2</sup>  
Bedroom : 9.50m<sup>2</sup>  
Bedroom : 20.00m<sup>2</sup>  
Bedroom : 9.60m<sup>2</sup>  
Bedroom : 16.60m<sup>2</sup>  
Bedroom : 17.00m<sup>2</sup>  
Entry Halls : 33.30m<sup>2</sup>  
Shower : 2.75m<sup>2</sup>  
Bathroom : 7.00m<sup>2</sup>  
Bathroom : 7.06m<sup>2</sup>  
Balcony : 8.90m<sup>2</sup>  
Terrace : 38.15m<sup>2</sup>

## C BLOCK 4. NORMAL FLOOR - PENTHOUSE











**ELYA GROUP**